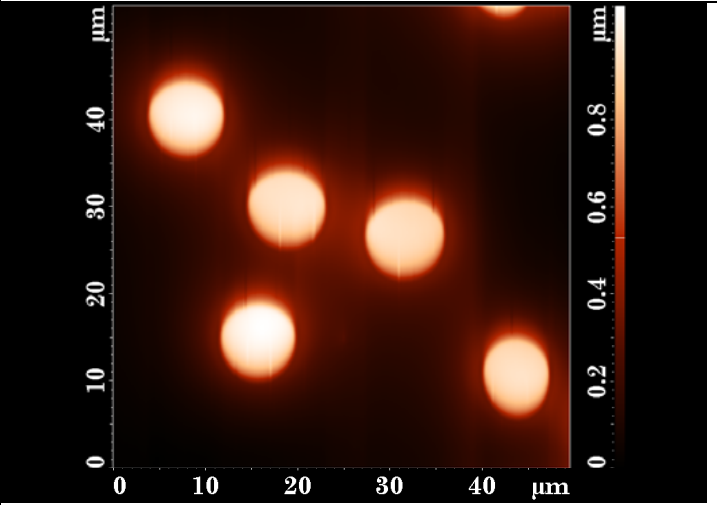
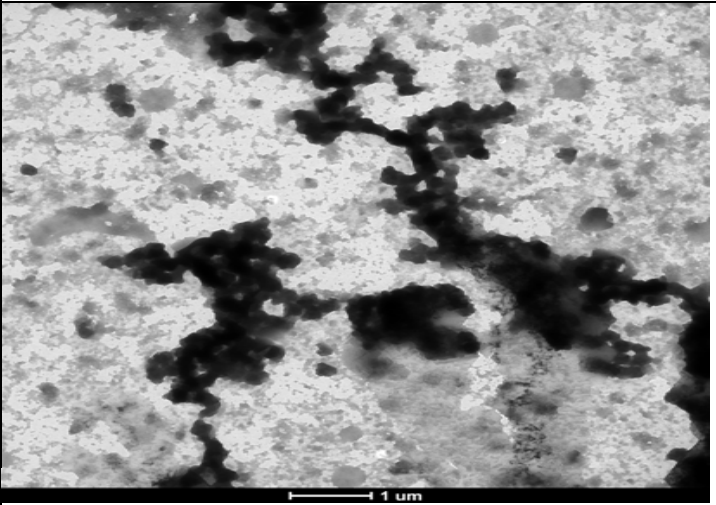
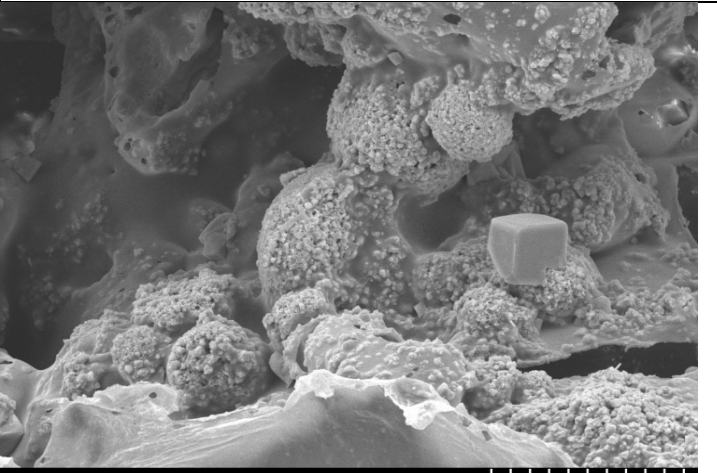
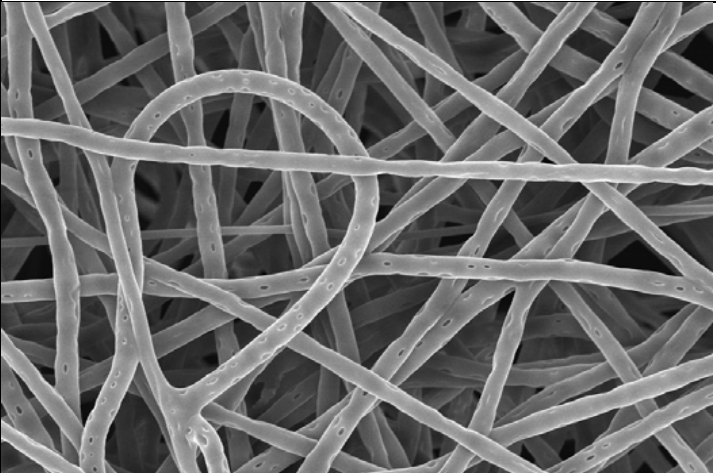
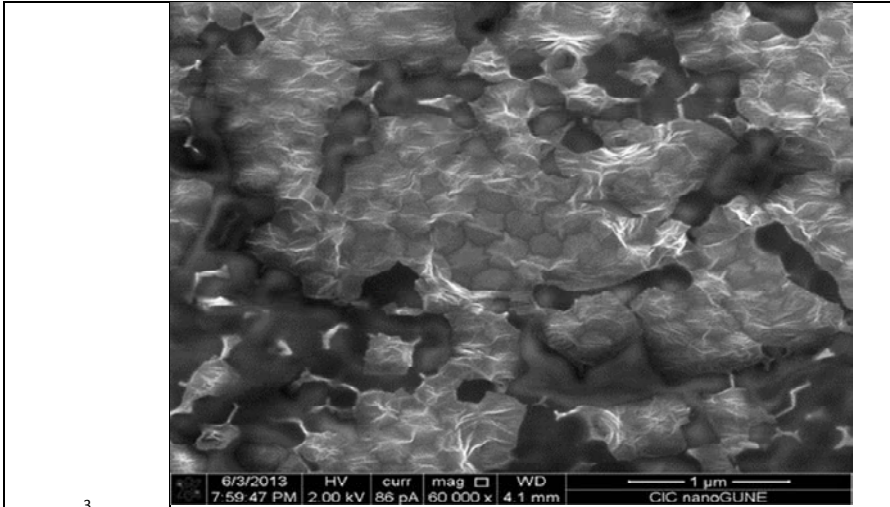


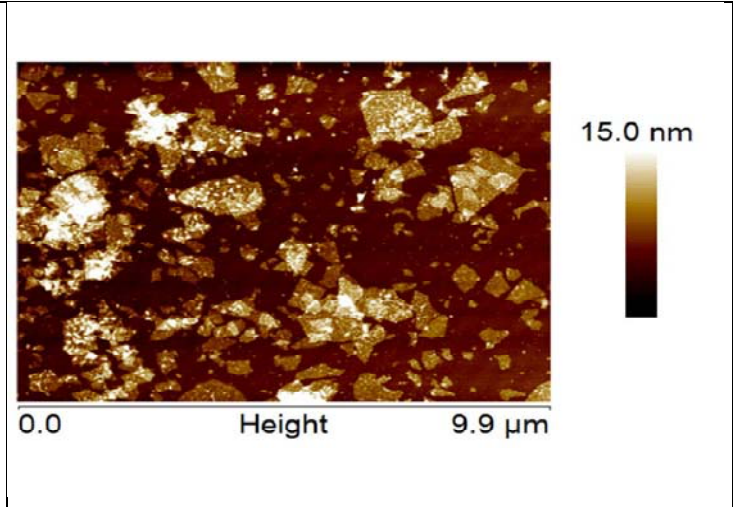
1st Scientific Photography Award

NÚMERO	FOTO 1	FOTO2
1	 <p data-bbox="264 767 887 788">AFM Image of Red Blood Cells after magneto-nanogel particles incubation in native whole blood</p>	 <p data-bbox="987 767 1451 788">TEM Image of nanogel particles after the reductive degradation by GSH</p>
2	 <p data-bbox="264 1265 954 1286">S4800 15.0kV 8.0mm x700 SE(M) 50.0um</p> <p data-bbox="264 1305 916 1321">SEM: La guarida de las células. Una partícula de sal permaneció en el interior de la estructura porosa</p>	 <p data-bbox="987 1265 1686 1286">S4800 15.0kV 8.4mm x1.00k SE(M) 50.0um</p> <p data-bbox="987 1305 1451 1321">SEM: Fibras regenerativas. Fibras poliméricas en la escala micrométrica.</p>

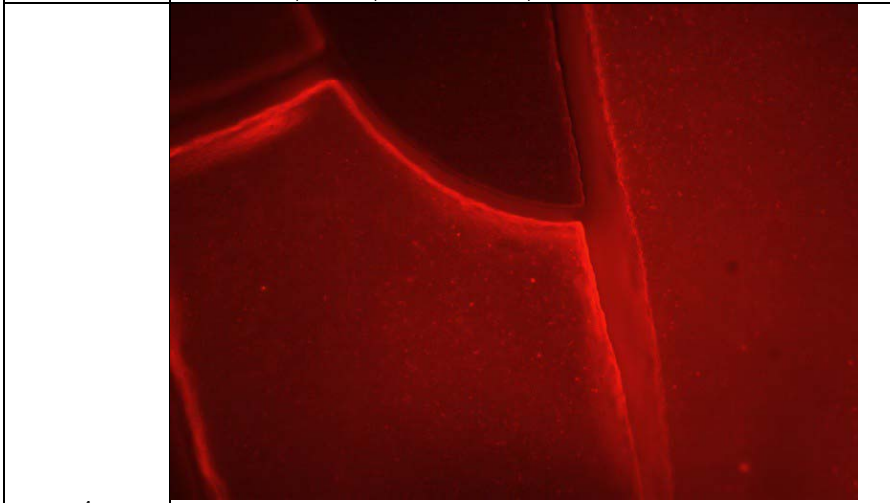


3

FE SEM: Partículas poliméricas parcialmente cubiertas por láminas de rGO

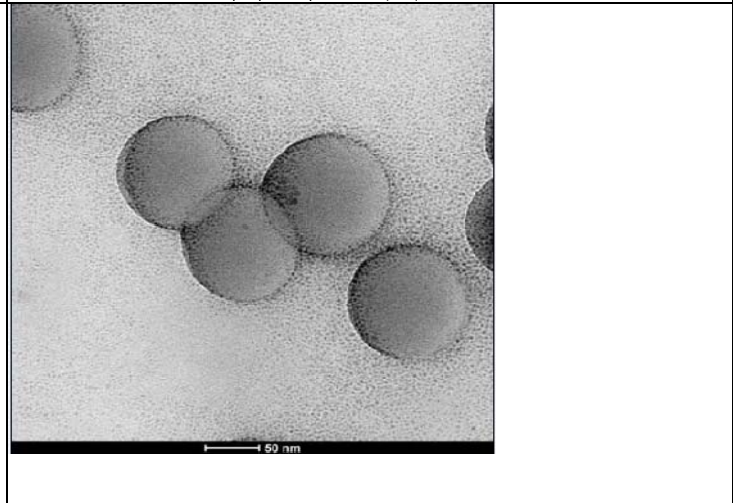


AFM: Láminas de rGO recubiertas por polivinilpirrolidona (PVP)

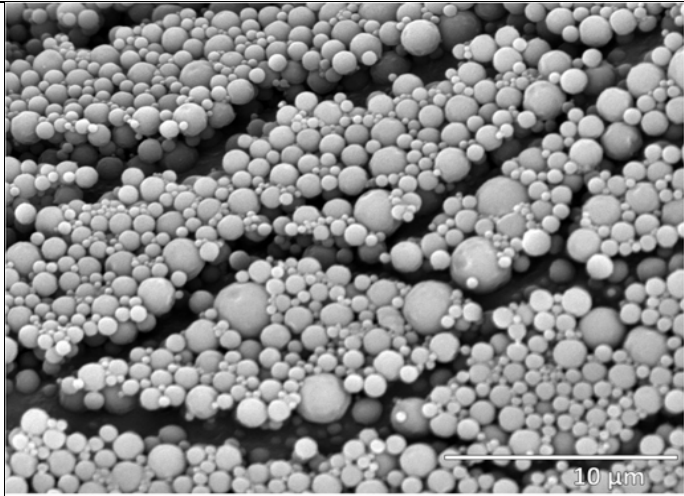


4

Fluorescence microscopy picture of a polystyrene film containing CdSe/ZnS quantum dots

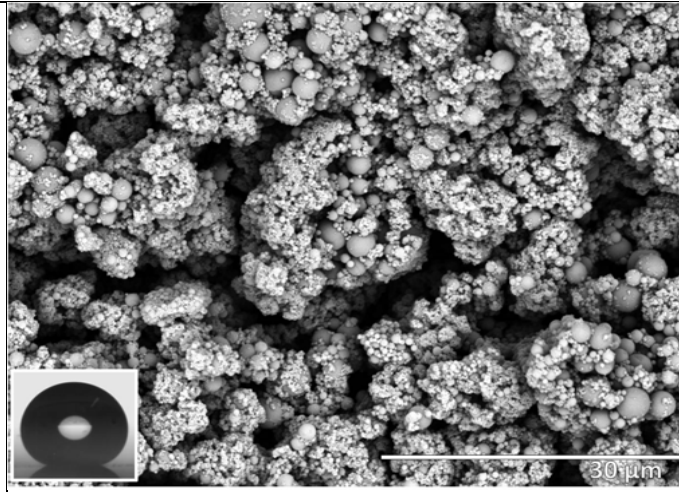


TEM picture of a polystyrene latex containing CdSe/ZnS quantum dots.

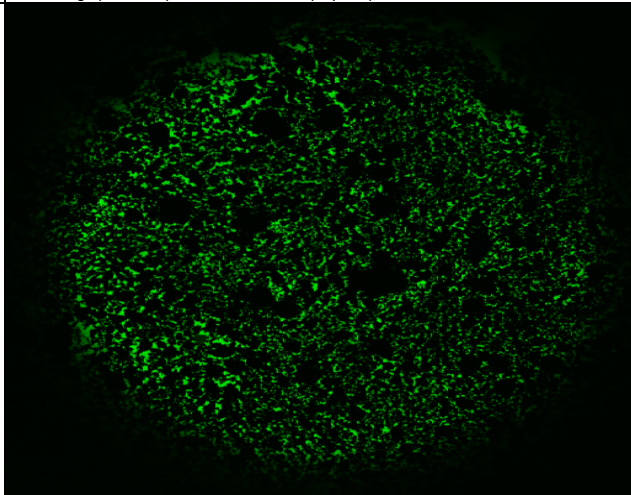


5

SEM micrograph of a dispersion of fluorinated polymer particles

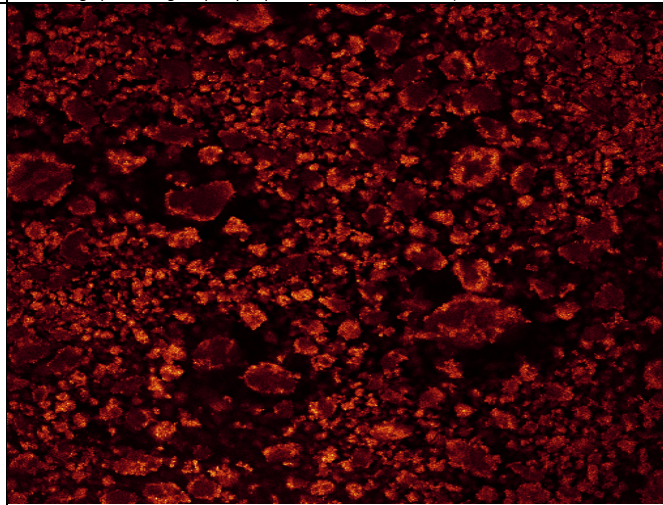


SEM micrograph showing a superhydrophobic surface ($\theta_{\text{water}} > 160^\circ$)

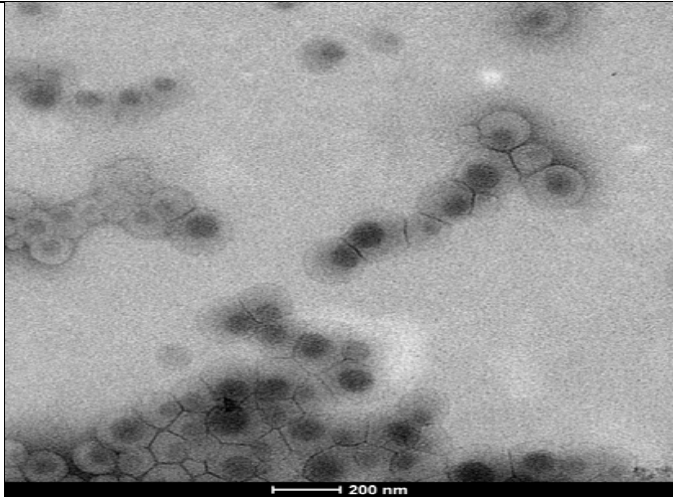


6

Confocal microscope image looking into the shell of a "liquid marble" produced with rhodamine-B liquid cori

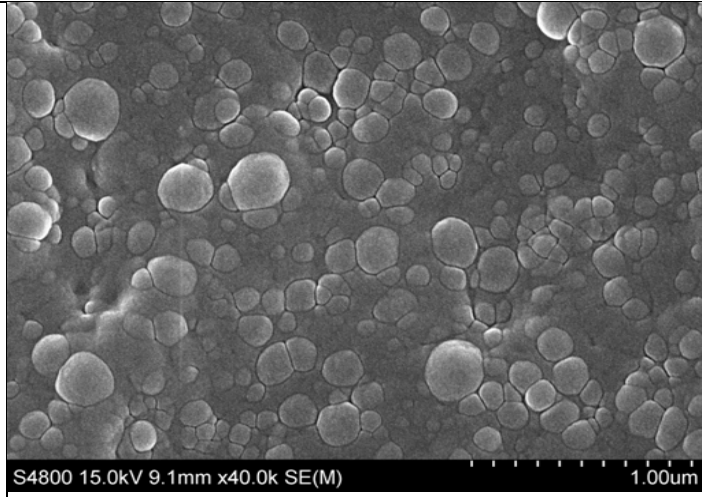


Confocal microscope image of the close-up view of "liquid marble" surface

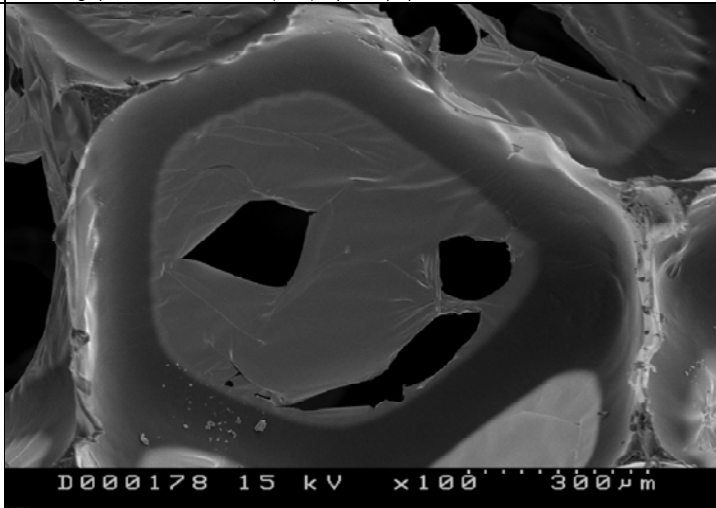


7

TEM micrographs of SA-Short side chain (meth)acrylate copolymer latex = 30-70 wt%

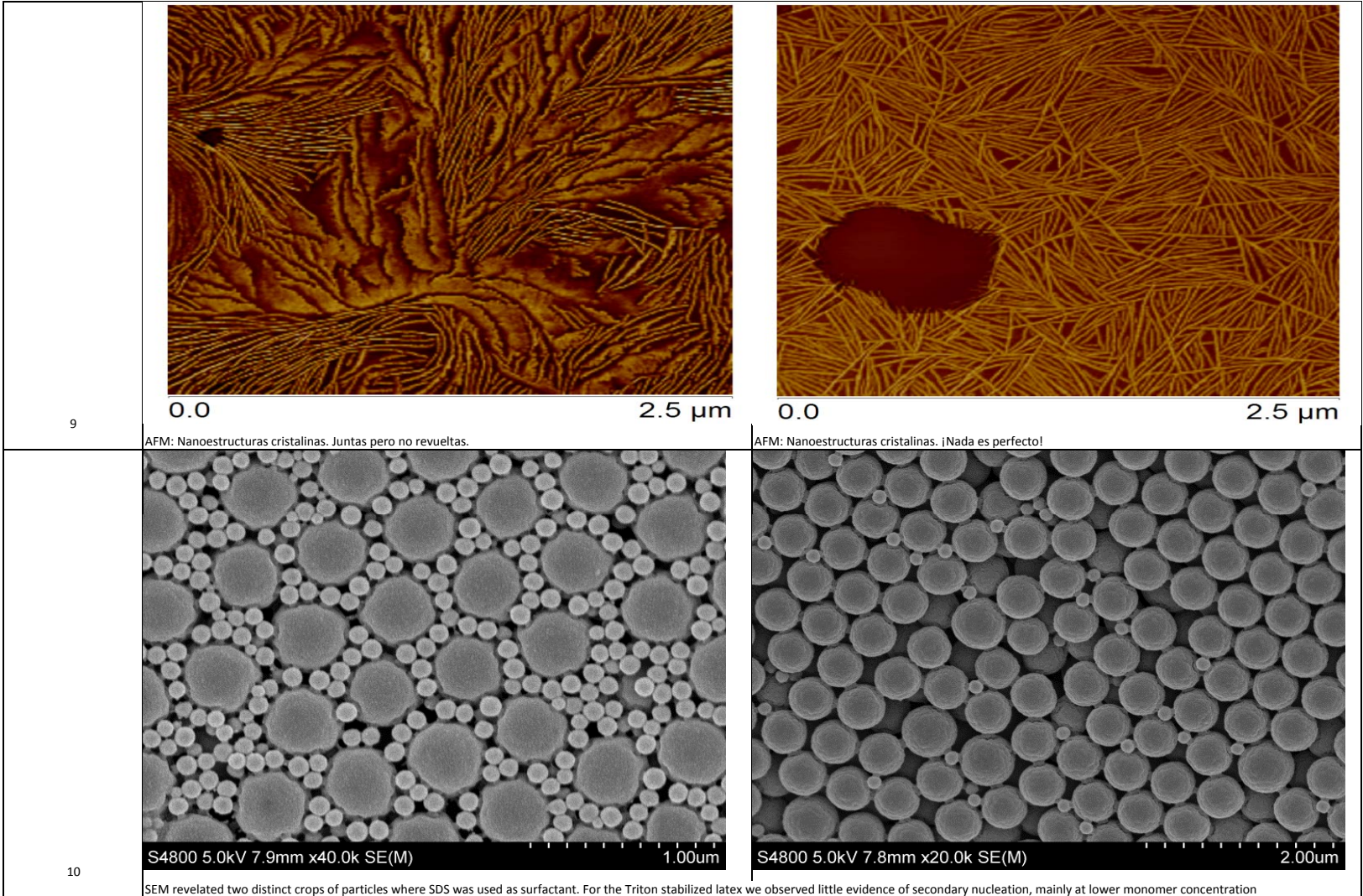


TEM micrographs of fractured surface of SA-Short side chain (meth)acrylate copolymer film = 30-70 wt%, Dried at ambient temperature

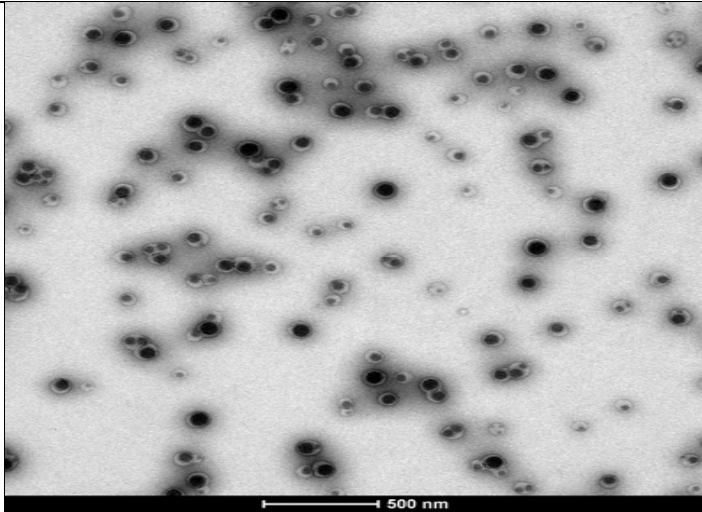


8

SEM: La "cara" revelde. Al analizar la distribución del grafito expandible en las espumas sintetizadas



11

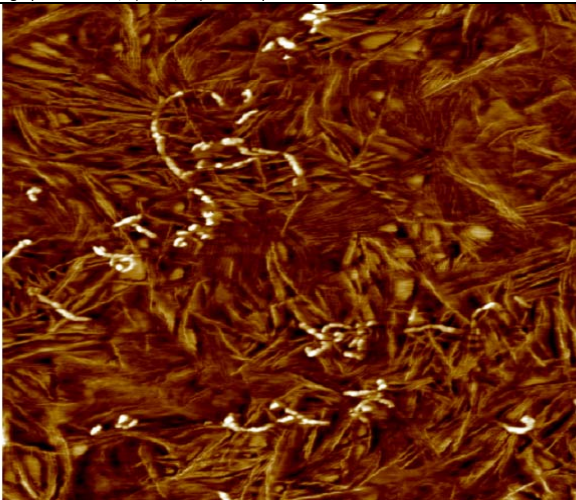


TEM micrograph of a PCTFE/P(MMA/BA) latex dispersion

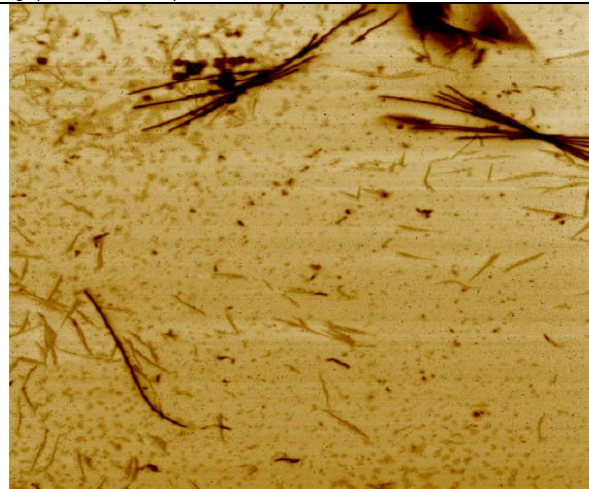


AFM micrograph of PVDF/PMMA hybrid films

12

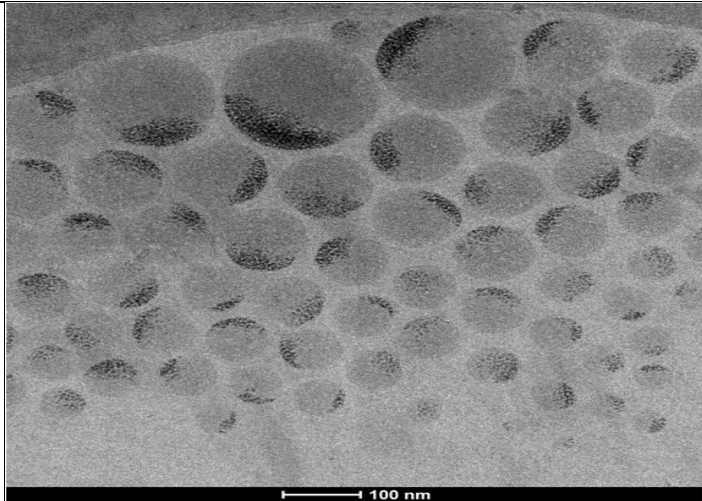


AFM: "Gusanos atrapados entre espinas". Situación de los nanotubos dentro de la matriz polimérica

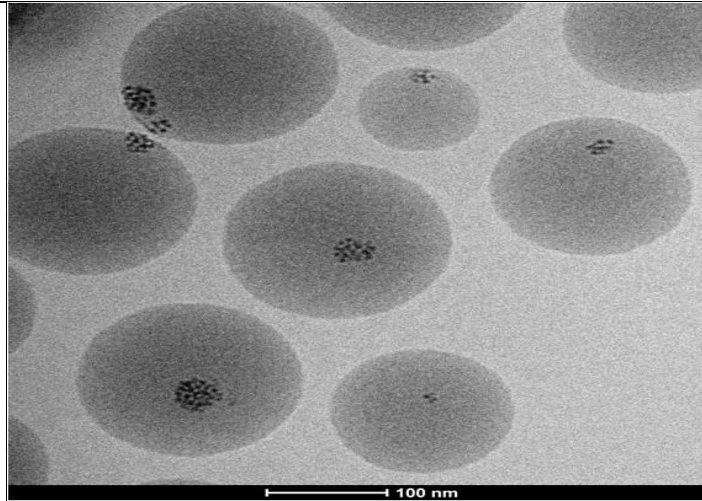


AFM: "Nacimiento de lamelas en un país hostil". Primeros estadios de la cristalización del Poliuretano: el nacimiento de las lamelas desde el estado fundido

13

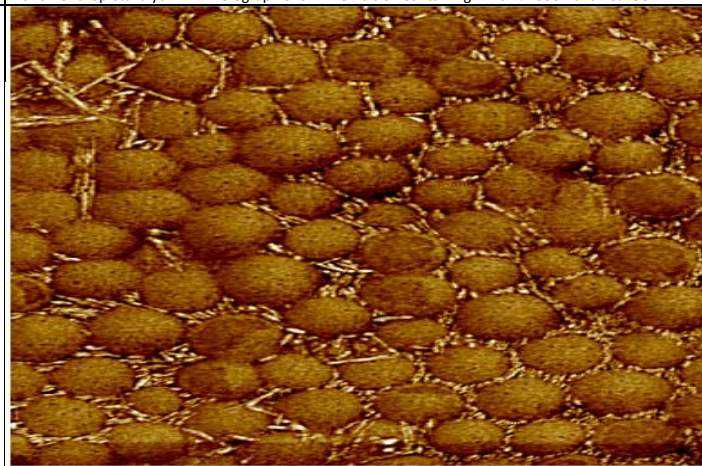


Monomer droplets: cryo-TEM micrograph of a miniemulsion containing 2 wbm% CeO₂ and 40% SC



Acrylic/CeO₂ hybrid latex: cryo-TEM micrograph of the final hybrid latex with a final CeO₂ content of 1 wbm% and 40% SC

14



0.0 2.0 Phase 2.0 μm
AFM: High solids content latexes with migratory-free surfactants