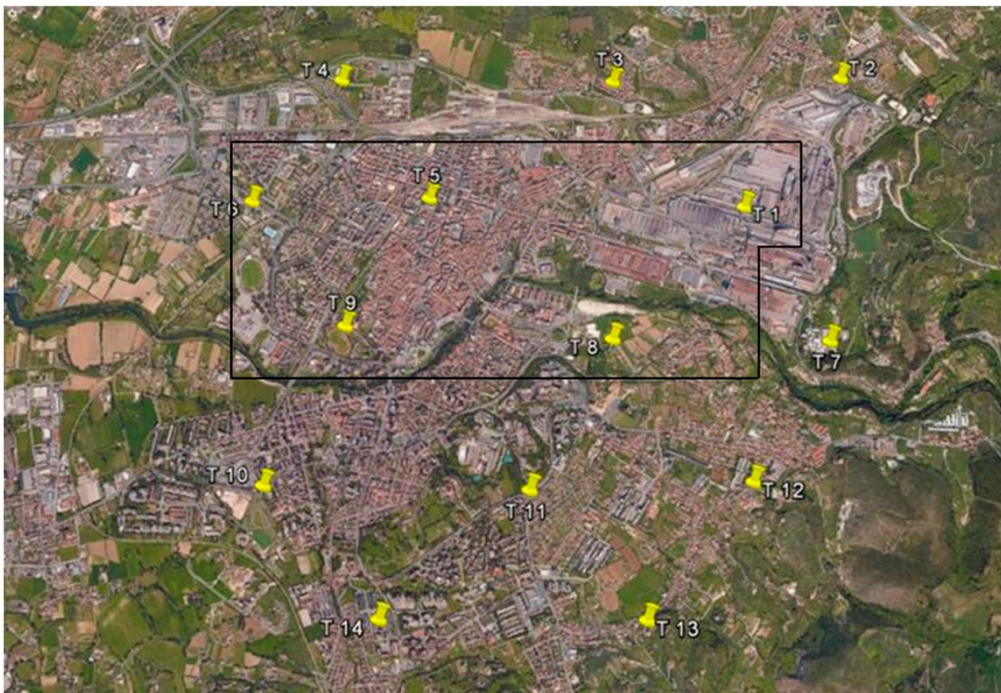


ANALYSIS OF THE EVOLUTION OF LAND USE IN TXORIERRI AREA FROM 1945 TO 2016 USING GEOGRAPHIC INFORMATION SYSTEMS(QGIS)



Realized by: **Stephania Nedelcu**

Coordinated by: **Irantzu Alvarez**

Index

| | |
|------------------------|---------|
| 1. Abstract..... | page 3 |
| 2. Introduction..... | page 4 |
| 2.1.Bilbao..... | page 5 |
| 2.2.Factors..... | page 6 |
| 3. Methodology..... | page 7 |
| 3.1 QGIS..... | page 7 |
| 3.1.1 First step..... | page 8 |
| 3.1.2 Second step..... | page 9 |
| 4. Conclusion..... | page 15 |
| 5.Bibliography..... | page 16 |

1. ABSTRACT

The project name is: "Analysis of the evolution of the land use Txorierrri area from 1945 2016 using geographic information system" and has been realized during the Erasmus intership at Universidad del Pais Vasco under careful guidance of the professor Irantzu Alvarez. Now, I will introduce you in the main subject of this paper, more exactly the subject is evolution and changes in various areas of Bilbao city during the years(from 1945 until 2016).

The researches show the major changes during 71 years in the right side of the river from Bilbao. We can observe major changes at this area, for example at the very beginning there was a huge amount of woods and cultivated fields and at the end of research it is easy to see that the urban area expended very much. To determine this evolution I used the software QGIS in which I divided the right side of the river in polygons and put an id and a code to every polygon.

ACKNOWLEDGEMENTS

The author is gratefully acknowledge **funding from the Basque Regional Government [grant number IT781-13]**

BIBLIOGRAPHY

1. www.wikipedia.com
2. <http://www.independent.co.uk/travel/europe/bilbao-how-the-city-has-remade-itself-along-the-river-10191747.html>
3. <https://www.theguardian.com/cities/2015/apr/30/bilbao-effect-gehry-guggenheim-history-cities-50-buildings>
4. <http://www.mascontext.com/issues/30-31-bilbao/bilbaos-strategic-evolutionthe-metamorphosis-of-the-industrial-city/>
5. <http://www.qgis.org/ro/site/>