

PARTNER UNIVERSITY FACT SHEET

Student exchange programmes

General information

| | |
|---|---|
| ➤ Name of institution & abbreviation | Universidad del País Vasco/ Euskal Herriko Unibertsitatea (UPV/EHU) University of the Basque Country |
| ➤ Website | www.ehu.eus |
| ➤ Erasmus code of institution | EBILBAO01 |
| ➤ OID | E10208839 |

International Relations Office (IRO)

| | |
|--|---|
| ➤ Address of IRO | International Relations Office Vice Rectorate for Basque, Culture and Internationalization Central library building, floor 2 Barrio Sarriena s/n 48940 Leioa, SPAIN internacional@ehu.eus |
| ➤ Website for visiting students | www.ehu.eus/en/web/nazioarteko-harremanak/en-exchange-students |

Agreements for students, teaching and staff exchange

| Programme | Contact person | Contact data |
|--|--|---|
| International networking | Bryan Leferman Director for international mobility director.internacional@ehu.eus | Vice Rectorate for Basque, Culture and Internationalization Rectorate building Barrio Sarriena s/n 48940 Leioa, SPAIN Tel: +34 946012040 |
| Outside ERASMUS+ (Latinamerca, USA, Canada, Russia, Asian countries) | Erika Fernandez letrado.internacional@ehu.eus Tel: +34 94601 2166 | International Relations Office Leioa Library building, floor 2 Barrio Sarriena s/n 48940 Leioa, SPAIN Tel: +34 6017903 |
| SICUE (Exchanges among Spanish universities) | Irantzu Sologuren seneca@ehu.eus Tel: +34 946012089 | |
| Erasmus + Bilateral agreements Staff exchange | Ms Idoia Ortiz de Landaluce agreements.internacional@ehu.eus staff.internacional@ehu.eus Tel: +34 943018136 | International Relations Office Donostia-SS Ignacio M ^a Barriola Elhuyar Plaza, 1 20118 Donostia - San Sebastian |

*Academic calendar

(*Further details on our academic calendar to be found on the website of the relevant faculty / school)

| | Autumn/First semester | Spring/Secondsemester |
|-------------------------|-----------------------|-----------------------|
| ➤ Lessons starting date | Early September | End of January |
| ➤ Lessons end date | Mid January | Mid May |
| ➤ Examinations period | January | May/June (retakes) |

Application and registration procedures

| | | | | | | |
|---|---|--|-------------------------------|------------------------|--|---------------------------|
| Application documents | 1. Copy of Passport/ID 2. Application form (downloaded from website) 3. Learning agreement proposal (a temporary form should be filled in prior to arrival; the final LA will be signed upon arrival at the University of the Basque Country) | | | | | |
| | ERASMUS+ | The above mentioned documents should be handed in to the school/faculty coordinator at the University of the Basque Country https://www.ehu.eus/en/web/nazioarteko-harremanak/en-coordinators-contact | | | | |
| | Outside ERASMUS+ | All documents sent to: incoming.internacional@ehu.eus | | | | |
| Online registration | Once processed the application the student will receive an invitation to an online registry that is required to issue the acceptance. www.ehu.eus/en/web/nazioarteko-harremanak/en-exchange-students | | | | | |
| UPV/EHU Registration | After arriving at the UPV/EHU, with the registration form, these documents will be delivered for registration: <table style="width: 100%; border: none;"> <tr> <td style="width: 50%;">1. Proof of Medical insurance</td> <td style="width: 50%;">3. Copy of passport/ID</td> </tr> <tr> <td>2. Copy of enrolment form at home university</td> <td>4. 3 passport-size photos</td> </tr> </table> Application forms: www.ehu.eus/en/web/nazioarteko-harremanak/en-exchange-students | | 1. Proof of Medical insurance | 3. Copy of passport/ID | 2. Copy of enrolment form at home university | 4. 3 passport-size photos |
| 1. Proof of Medical insurance | 3. Copy of passport/ID | | | | | |
| 2. Copy of enrolment form at home university | 4. 3 passport-size photos | | | | | |
| For information regarding academic matters | Contact your academic coordinators at your faculty/school at the University of the Basque Country | List of coordinators: https://www.ehu.eus/en/web/nazioarteko-harremanak/en-coordinators-contact | | | | |

Courses at the University of the Basque Country

| | |
|---|--|
| ➤ Courses/programmes open to visiting students | - Visit website for the faculty/school you will be visiting. - Ask your academic coordinator at the department you will be visiting. |
| ➤ Courses taught in English | Visit website: www.ehu.eus/en/web/nazioarteko-harremanak/en-coordinators-contact |
| ➤ Study areas restricted to exchange students | Medical studies: check possibilities and restrictions with academic coordinator |



Spanish and Basque courses for visitors

| | |
|-------------------------------------|--|
| ➤ Spanish and Basque courses | Fall:Septemberto December; Spring:JanuarytoMay Duration: Fall and Spring semesters Intensive Spanish course: late August Venue:Campusof Alava,Biscay& Gipuzkoa |
| ➤ Further information | https://www.ehu.eus/en/web/nazioarteko-harremanak/en-available-courses |

Cost of living

| | | |
|--|--------------------|----------------------|
| ➤ Average monthly expenses (in euros) | Accommodation | 350-500 euros |
| | Food | 250-300 euros |
| | Transport | 35 euros |
| | Academic material | -- |
| | Miscellaneous | 100 euros |
| | TOTAL/MONTH | 735-935 euros |

Accommodation for visiting students

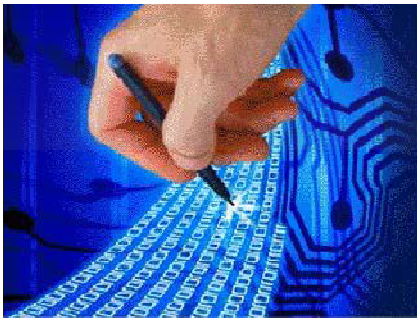
| | |
|---|--|
| | Most visitors choose to live in shared, rented flats in the city centres or in family stays. There are also university and private student residences where visitors can settle. |
| ➤ Who can help you? Help Centres | <p>Campus of Alava helpcentre1.internacional@ehu.eus University Pavillion; Los Apraiz 1 ViceRectorate of the Campus of Alava Comandante Izarduy, 2 01006 Vitoria-Gasteiz Tel: +34 945 014334</p> <p>Campus of Biscay (Leioa) helpcentre2.internacional@ehu.eus Central Library building, floor 2 Barrio Sarriena s/n – 48940 Leioa-Erandio Tel: +34 946015868</p> <p>Campus of Biscay (Bilbao) helpcentre3.internacional@ehu.eus Higher Technical School of Engineering Desk P1G11 Pza Ingeniero Torres Quevedo 1, 48013 Bilbao Tel: +34 946017365</p> <p>Campus of Gipuzkoa (Donostia-San Sebastián) helpcentre4.internacional@ehu.eus Ignacio María Barriola building, floor 1 Plaza Elhuyar, 1 – 20018 Donostia-SS Tel: +34 943015192</p> |
| ➤ Open: August to October; January to March | |
| ➤ Uninterrupted online assistance | |

Medical insurance

➤ Medical insurance

- **EU countries:** students need to get their European Health Card at country of origin.
- **Non EU countries:** visitors from outside Europe need to purchase a medical insurance in force throughout their stay at the University of the Basque Country.

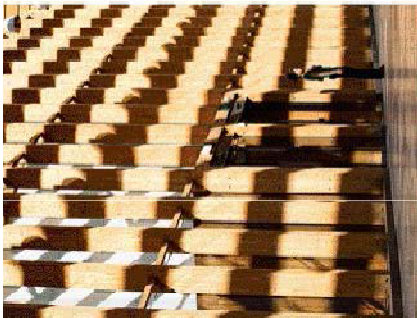
University of the Basque Country, photo gallery



Escuela de Ingeniería



Centro Carlos Santamaría



Vistasgenerales Area Leioa-Erandio

