

Estadistics for November/2019

December 1, 2019

Arina

In this brief document we show the usage of arina during November. This month 88115 computing days where used and the the average use of the cluster was 79 %. Since the first of December 1091382 computing days where used and the the average use of the Arina cluster was 80 %. The figure shows the usage of Arina along the month. In the first table the usage of each user is shown. The third column indicates all the time each user has used for calculation during this month. The fourth column shows the average time that each job was waiting before the it started running, in days units. In the second table, the same data as in table 1 collected by group is shown.

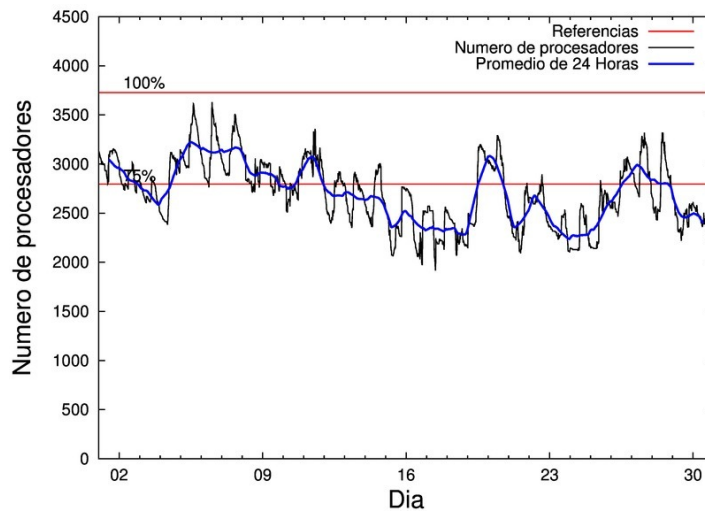


Figure 1: Cluster use. The blue line is a 24 hours average.

Table 1: Calculated time and waiting time in days of the users.

USER	GROUP	Calculated Days	Waiting Time
povhehea	poahh	24408.50	1.78
qovzaxxr	polymat	13977.72	0.57
poaugbia	pojoo	7143.37	0.10
kixmagre	poemg	6434.85	0.48
doxcarei	poemg	3546.12	1.93
povpisim	pomps	2719.22	0.00
enxararo	egune	2710.21	4.30
bgpjiaqd	bgjbp	2085.62	0.09
csazusej	nanogune	2026.16	2.29
pobladej	poxlp	1966.20	0.00
quamearx	qfila	1938.18	0.43
scavinam	poemg	1789.93	0.10
bcpliolj	bgjbp	1739.16	0.45
qfpmamoh	qfila	1670.70	0.08
quainbea	qfjfg	1324.41	0.02
quxtaxxs	polymat	1254.76	0.32
kiaolfeb	potss	1187.45	0.19
povwawaj	pojoo	993.34	3.67
kixgrazr	potmb	918.17	0.01
povrucif	polymat	840.82	0.27
pobmabej	potmb	711.42	0.03
pobdadae	poxlp	676.75	0.03
poasibrd	poxlp	518.57	0.16
poarloi	pojoo	489.31	0.11
enbropes	egune	471.77	0.01
enbxilij	egune	455.57	0.19
qobcacea	qocpn	423.55	0.00
popporiv	poxlp	420.74	0.28
faaatnaa	faraz	339.09	0.01
poagafrm	pojoo	252.54	0.00
poamaxg	polymat	241.63	0.09
qopgobee	qocpn	231.97	0.00
enbropes	qfila	222.97	0.00
povracoe	pomps	205.39	1.19
faacalea	qfjfg	200.38	0.00
dibxuxux	poxlp	186.99	0.01
kiasomal	qocpn	179.83	0.00
poadarj	poxlp	167.16	0.00
qfpesmai	qfila	136.73	0.00
fsbikasl	fsfsb	122.12	0.02
kibderua	qoabl	120.64	0.00
pobtm01	potmb	108.87	0.01
popugurj	pojoo	87.83	1.12
qoprualg	qofpg	77.40	0.00
ciaansap	pojoo	68.06	0.00
ciazuulm	pojoo	59.14	0.02
dixsasam	pojoo	46.68	0.00

kixsasal	pojuu	38.67	0.00
pobgrgrs	pomps	36.66	0.00
quaegmae	qocpn	35.01	0.00
pobrease	potmb	28.08	0.00
qobpamap	qocpn	21.83	0.00
pobmelat	arinadm	20.00	0.00
poairurm	polymat	14.00	1.47
pobfoese	poxlp	10.58	0.00
pobnanac	poemg	10.47	0.00
qopcomof	qofcm	9.73	0.00
quxlegoa	qfjfg	6.49	0.04
bcpremae	bcdbu	1.24	0.00
qfbalale	qfjfg	1.21	0.00
oraruori	poxlp	1.08	0.05
fabusgui	qfjfg	0.98	0.00
pobera01	poxlp	0.40	0.00
povdesad	poxlp	0.38	0.88
bckmimoj	qfjfg	0.17	0.00
qfbloala	qfjfg	0.14	0.00
poaazago	potmb	0.00	0.01
oibaclaa	oijgc	0.00	0.00

Table 2: Calculated time and waiting time in days of the groups.

GROUP	Calculated Days	Waiting Time
poahh	24408.50	1.78
polymat	16328.93	0.34
poemg	11781.37	0.32
pojoo	9178.93	0.09
qfila	3968.58	0.20
poxlp	3948.86	0.04
bgjbp	3824.78	0.17
egune	3637.54	1.89
pomps	2961.27	0.51
nanogune	2026.16	2.29
potmb	1766.54	0.01
qfjfg	1533.78	0.02
potss	1187.45	0.19
qocpn	892.20	0.00
faraz	339.09	0.01
fsfsb	122.12	0.02
qoabl	120.64	0.00
qofpg	77.40	0.00
arinadm	20.00	0.00
qofcm	9.73	0.00
bcdbu	1.24	0.00
oijgc	0.00	0.00

Arina Data Storage Top Users

In the following graph we plot the users having more data in Arina in the last month. If you appear in this graph, we strongly encourage you to reduce your data in Arina.

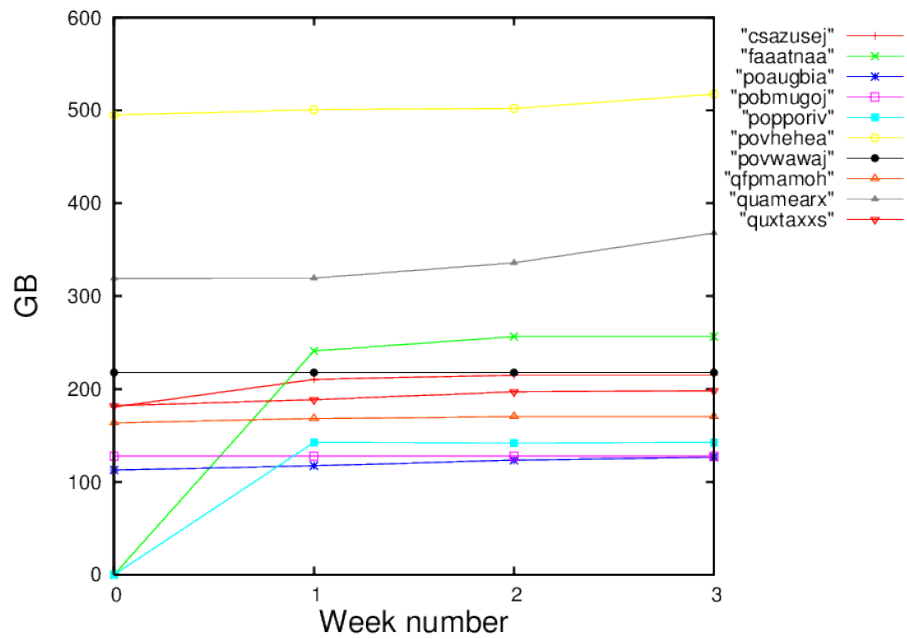


Figure 2: Storage evolution in the last month in GB.