

Estadistics for July/2019

August 1, 2019

Arina

In this brief document we show the usage of arina during July. This month 92610 computing days where used and the the average use of the cluster was 80 %. Since the first of December 741178 computing days where used and the the average use of the Arina cluster was 82 %. The figure shows the usage of Arina along the month. In the first table the usage of each user is shown. The third column indicates all the time each user has used for calculation during this month. The fourth column shows the average time that each job was waiting before the it started running, in days units. In the second table, the same data as in table 1 collected by group is shown.

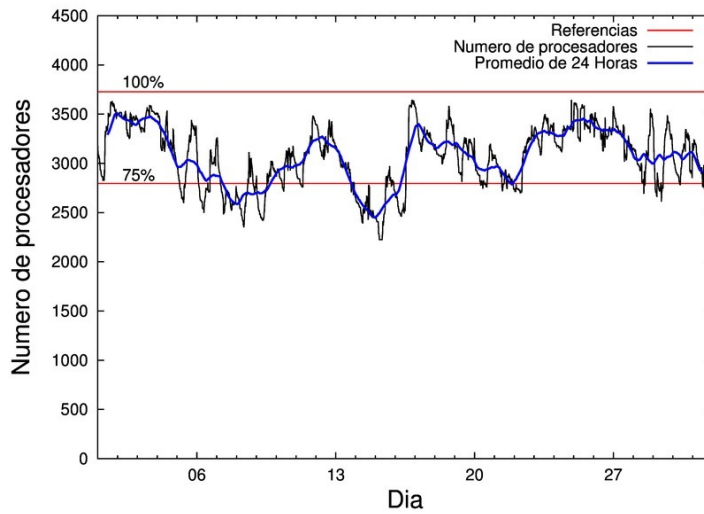


Figure 1: Cluster use. The blue line is a 24 hours average.

Table 1: Calculated time and waiting time in days of the users.

USER	GROUP	Calculated Days	Waiting Time
povhehea	poahh	17539.23	0.99
qovzaxxr	polymat	16511.51	0.33
poairurm	polymat	6568.20	0.68
poaugbia	pojoo	6446.04	0.10
povwawaj	pojoo	4843.89	0.66
qfpesmai	qfila	4495.61	0.04
quxtaxxs	polymat	2496.25	0.09
qfpmamoh	qfila	2426.04	0.11
poamaxg	polymat	2415.85	0.28
pobmabej	potmb	2404.57	0.05
pobladej	poxlp	2322.89	0.18
poagafrm	pojoo	1371.93	0.12
povpisim	pomps	1344.08	0.10
povrucif	polymat	1322.83	0.11
pobgrgrs	pomps	1261.66	0.01
scpridei	qofcm	1252.67	0.01
poazago	potmb	1060.30	0.00
poanacuj	polymat	975.33	0.02
sckahnom	potmb	941.78	0.60
csazusej	nanogune	883.13	0.01
fabusgui	qfjfg	835.03	0.07
pobtxe01	poxlp	787.85	0.01
bcpliolj	bgjbp	734.07	0.19
scavinam	poemg	670.34	0.07
kixgrazr	potmb	591.45	0.03
poplopex	pojoo	570.27	0.00
bckmimoj	qfjfg	566.06	0.07
kibderua	qobl	547.22	0.01
bgpjiagd	bgjbp	503.65	0.19
povmieci	pojoo	500.43	0.04
qobpamap	qocpn	488.73	0.00
poaurura	poxlp	485.03	0.14
poarloi	pojoo	459.02	0.50
quamearx	qfila	425.02	0.00
poajejec	polymat	405.12	0.02
ciaansap	pojoo	392.00	0.02
doxcarei	poemg	384.80	0.11
qubhohol	qocpn	370.26	0.00
pobmugoj	pomps	365.35	0.19
qopgobee	qocpn	352.66	0.00
qobcacea	qocpn	351.41	0.00
kiadadag	pojoo	335.77	0.09
pobxlp01	poxlp	311.08	0.04
kiasomal	qocpn	303.63	0.01
kixsasal	pojoo	260.47	0.02
pobtmb01	potmb	226.46	0.00
ciaalece	pojoo	221.78	0.05

faacalea	qfjfg	148.19	0.08
kibderua	qofcm	113.87	0.01
poaganau	polymat	110.18	0.05
bcpremae	bcdbu	107.98	0.00
poasibrd	poxlp	101.18	0.01
quaduree	qfila	100.01	0.02
pobera01	poxlp	85.08	0.00
quainbea	qfjfg	80.52	0.11
ciazuulm	pojoo	77.05	0.15
pobababh	polymat	75.16	0.00
enbzhzh	egune	61.12	0.04
faaatnaa	faraz	39.75	0.00
qfbalale	qfjfg	37.59	0.02
bgpmafea	bgjal	29.50	0.00
webogare	arinadm	24.68	0.00
qoparaya	qofcm	21.59	0.00
dixsasam	pojoo	11.93	0.00
ciaolarb	pojoo	11.05	0.00
pobrease	potmb	9.21	0.00
qfbolsaa	qfila	8.65	0.00
pobmelat	arinadm	5.06	0.01
kiaurbao	poxlp	4.85	0.00
qfpbaprij	qfila	4.53	0.00
qobsalae	qambm	4.35	0.00
poblairo	poxlp	3.20	0.00
qubcaxxc	qfjfg	2.15	0.00
quarulob	qfjfg	2.03	0.00
pobfoese	poxlp	0.19	0.00
ggpzamai	ggmer	0.19	0.00
biadecum	bicgm	0.08	0.00

Table 2: Calculated time and waiting time in days of the groups.

GROUP	Calculated Days	Waiting Time
polymat	30880.43	0.16
poahh	17539.23	0.99
pojoo	15501.63	0.10
qfila	7459.84	0.04
potmb	5233.77	0.05
poxlp	4101.36	0.03
pomps	2971.09	0.10
qocpn	1866.70	0.00
qfjfg	1671.59	0.06
qofcm	1388.14	0.01
bgjbp	1237.71	0.19
poemg	1055.13	0.07
nanogune	883.13	0.01
qoabl	547.22	0.01
bcdbu	107.98	0.00
egune	61.12	0.04
faraz	39.75	0.00
arinadm	29.74	0.00
bgjal	29.50	0.00
qambm	4.35	0.00
ggmer	0.19	0.00
bicgm	0.08	0.00

Arina Data Storage Top Users

In the following graph we plot the users having more data in Arina in the last month. If you appear in this graph, we strongly encourage you to reduce your data in Arina.

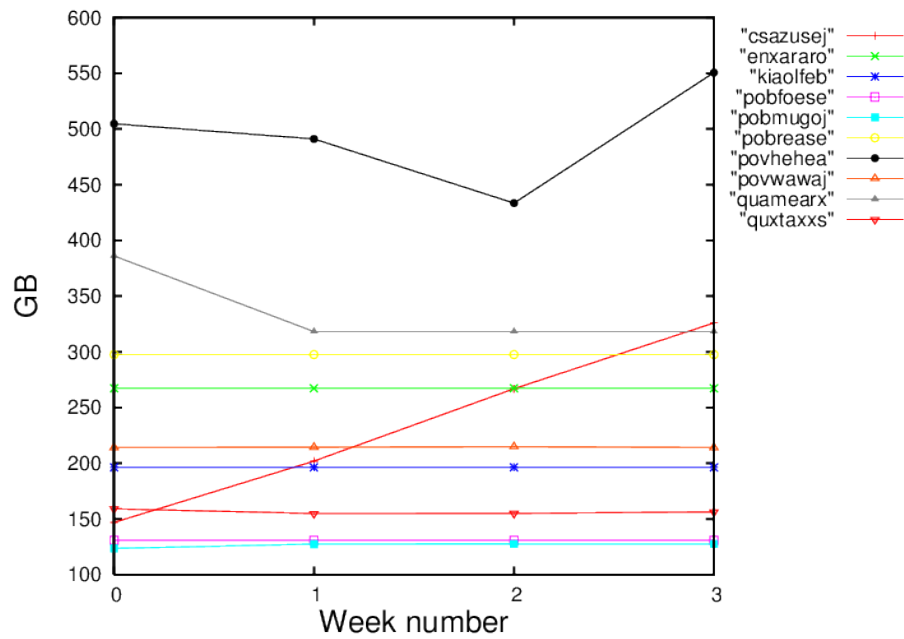


Figure 2: Storage evolution in the last month in GB.